

## Furniture manufacturer

### Adjustment

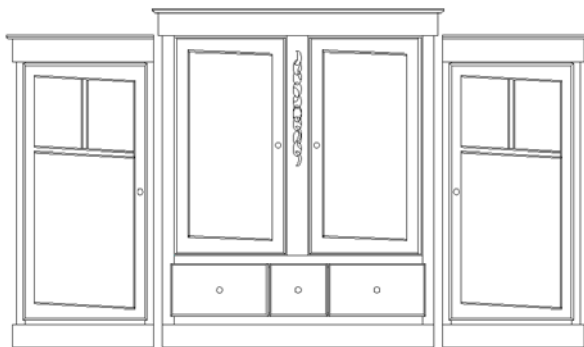
All of our three (3) sections wall units have adjustment screws at each for an easier, more precise and independent adjustment for each corners of the unit.

Step 1: Begin adjustments with central TV unit. with all four (4) adjustment screws supplied in each corner of the unit.

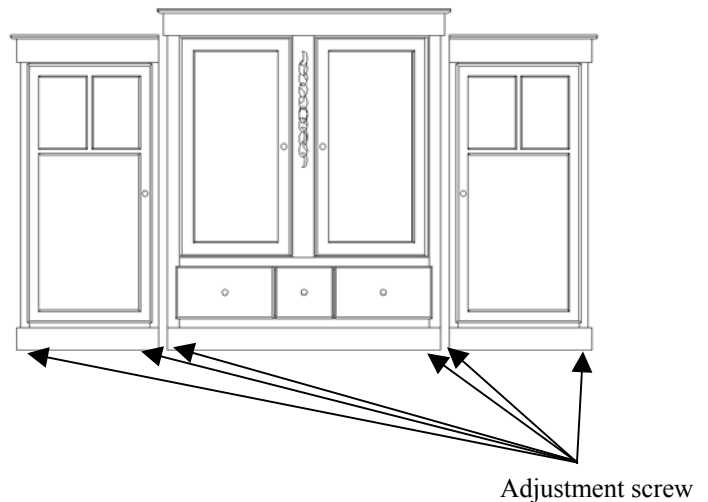
Step 2: Proceed the same way with each curios both sides of central TV unit (if applicable). See image below for adjustment hints.

*N.B. If you move the furniture to another place, you will need to repeat the alignment installation method.*

FURNITURE WITH UNALIGNED DOORS



FURNITURE WITH ALIGNED DOORS



### Possible problems

- Your retractable door is hard to push: you can spray white grease inside the track, which will lubricate the ball bearings.
- Your T.V. doors don't close properly on the hinge sides? You will need to open the door, push it back and pull it hard towards yourself 2 or 3 times.
- If your door doesn't close correctly (hard to close) on the handle side: Check if your installation method is right. If not, with a Robert's screwdriver, you can adjust again the pressure roller to make your door easier to close.

Congratulations for buying Concept Adateck Inc. Furniture  
Thank you for your confidence.